

BATTEN FLOOR SYSTEM

Snake gluing timber floor directly to battens top or secret nail.



ADVANTAGES

Allows to level very un-level substrate
Cheaper options to level a concrete slab
Hydronic heating can be installed between battens

DISADVANTAGES

Nosier
Substrate not sealed air could rise

PREPARING THE SURFACE

- *Concrete slab moisture content less than 67%. test with moisture meter
- * Concrete slab & to be clean & dry

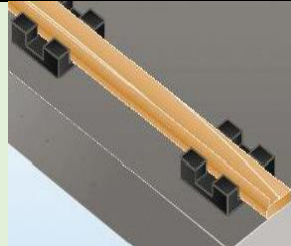
WHY FLOOR FAILS WHEN GLUING TO BATTENS

- *Battens were un-level
- *Fixed incorrectly to be installed to ATFA standards

METHODS WHEN INSTALLING BATTENS TO MOISTURE BARRIER, SOUND PROOF & LEVEL



Plastic Membrane Install plastic/battens



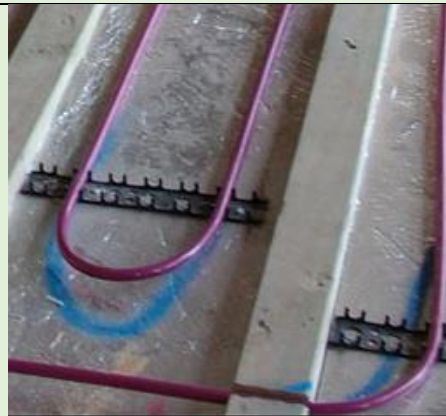
Acoustic pads



Wedge packer

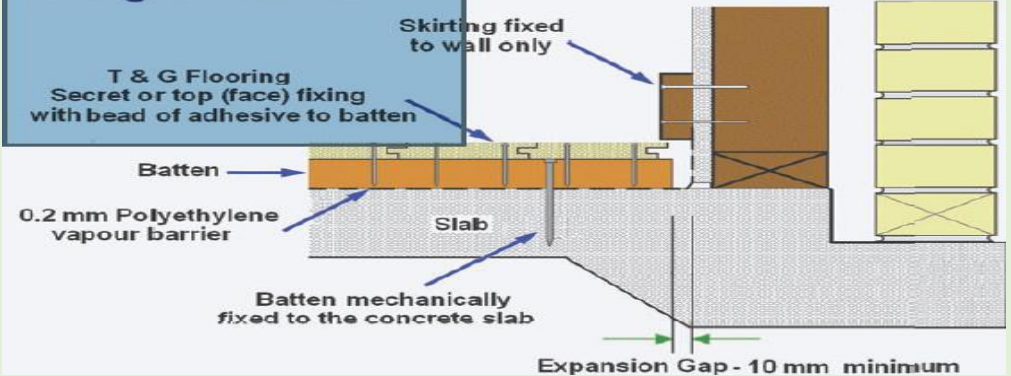


Packer 1mm to 15mm thick



Hydronic heating in battens

Fixing to Battens



Wood Solutions reference

Profiles of Timber Floor Glue to nail to joist



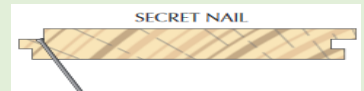
Oak Engineered Floor 21mm & 15mm, Thick



Solid Hardwood T & G Floor
19mm, 21mm, 32mm Thick



≥ 85mm width



≤ 85mm width

Spacing battens: 15mm thick use 300mm centres, 19mm to 21mm thick use 450mm centres

INSTALLING TO BATTENS TIMBER FLOOR OPTIONS

1. Concrete → Plastic membrane → Snake glue → Battens → secret nail → 60 to 80mm x 19mm solid T & G Floor
2. Concrete → Plastic membrane → Snake glue → Battens → top nail → 85 to 230mm x 21 solid T & G Floor
3. Concrete → Plastic membrane → Snake glue → Battens → secret nail → 220mm x 21mm engineered T & G Floor
4. Concrete → Plastic membrane → Snake glue → Battens → secret nail → 220mm x 15mm engineered T & G Floor
5. Concrete → Plastic membrane → Snake glue → Pad → Battens → secret/top nail → 21mm or 15mm engineered/ Solid Floor 19mm or 21mm

NASH TIMBERS 02 9337 6800

www.nashtimbers.com.au info@nashtimbers.com.au